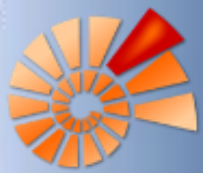


# The Diversity Workbench – a research data management platform as part of the GFBio infrastructure

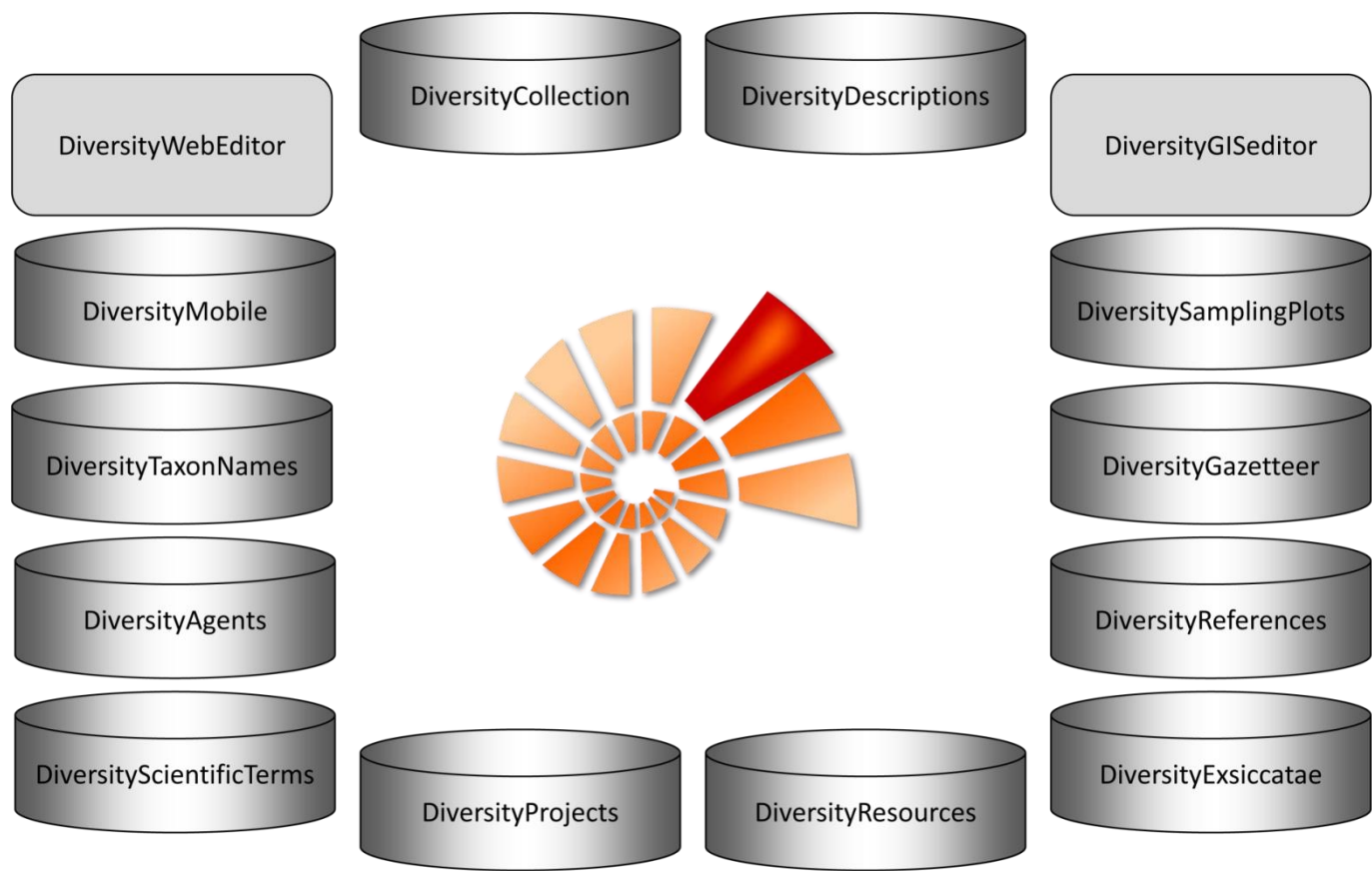
**Tanja Weibulat**

Markus Weiss, Wolfgang Reichert, Veronica Sanz,  
Anton Link, Gerhard Rambold, Dagmar Triebel

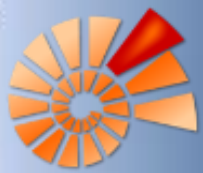
Staatliche Naturwissenschaftliche Sammlungen Bayerns, IT Center  
Universität Bayreuth



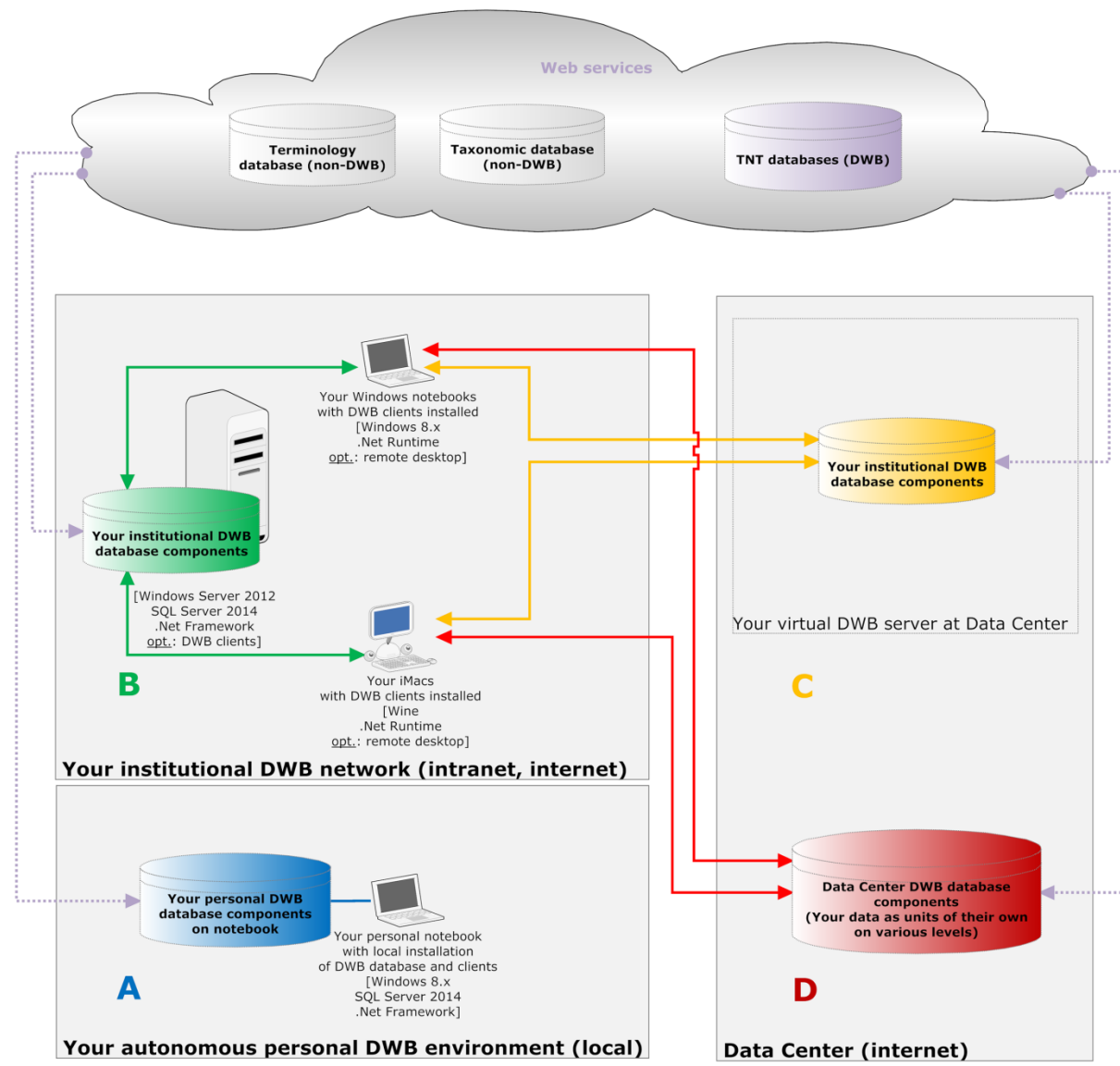
# Diversity Workbench (DWB)



[www.diversityworkbench.net](http://www.diversityworkbench.net)



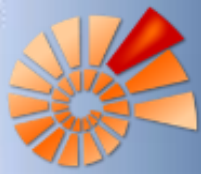
# Alternatives of DWB Installations



B: Project Data Repository

A: Own Master Databases

C+D: GFBio Data Center / Archive



The screenshot shows the GFBio website interface. At the top, there is a navigation bar with links for Home, Imprint, and Contact. Below this is a secondary navigation bar with links for About, Find & Use Data, and News & Events. The main header features the gfbio logo and a 'Welcome to gfbio' message. A search bar is located below the header. The main content area is divided into two columns. The left column contains the text 'german federation for the curation of biological data (gfbio)' followed by a paragraph about environmental and biological research challenges. The right column is titled 'news & events' and lists three recent events: a data management session on Sep 8, 2014; an rda third plenary meeting on Mar 26, 2014; and a kick-off meeting on Dec 4, 2013.

www.gfbio.org

Home Imprint Contact

About Find & Use Data News & Events

gfbio

Welcome to gfbio

FIND DATA

german federation for the curation of biological data (gfbio)

Environmental and biological research is becoming central to major societal challenges related to the Earth's ecosystems and climate dynamics.

To handle the scale and complexity of the scientific questions being addressed, there is a strong need to integrate knowledge because biological data are currently scattered and difficult to share. We propose here a coherent infrastructure to improve scientific data integration and preservation.

The project brings together national key players providing environmentally related biological data and services to develop the 'German Federation for the Curation of Biological Data' (GFBio). The overall goal is to provide a sustainable, service oriented, national data infrastructure facilitating data sharing and stimulating data intensive science in the fields of biological and environmental research. The federation will build on proven data archiving infrastructures and workflows such as those of PANGAEA for environmental data and the resources of Germany's major natural history collection data repositories. The new infrastructure will improve and integrate these existing components within a common technological and organizational framework.

The planned infrastructure will address data management requirements of a large range of stakeholders including individual scientists, natural history collections as well as larger research networks. It will be capable to handle highly interdisciplinary heterogeneous data. Within the current project, special consideration will be given to genome data, ecological and environmental data as well as collection related data. Services provided by the GFBio will cover the full life cycle of research data from field or real time data acquisition to long term archiving and publication as well as analysis and re-use of these data.

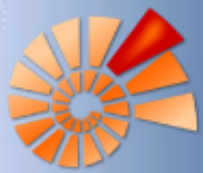
news & events

08 Sep 8, 2014  
SEP data management session at the 43rd annual meeting of the gfo in hildesheim

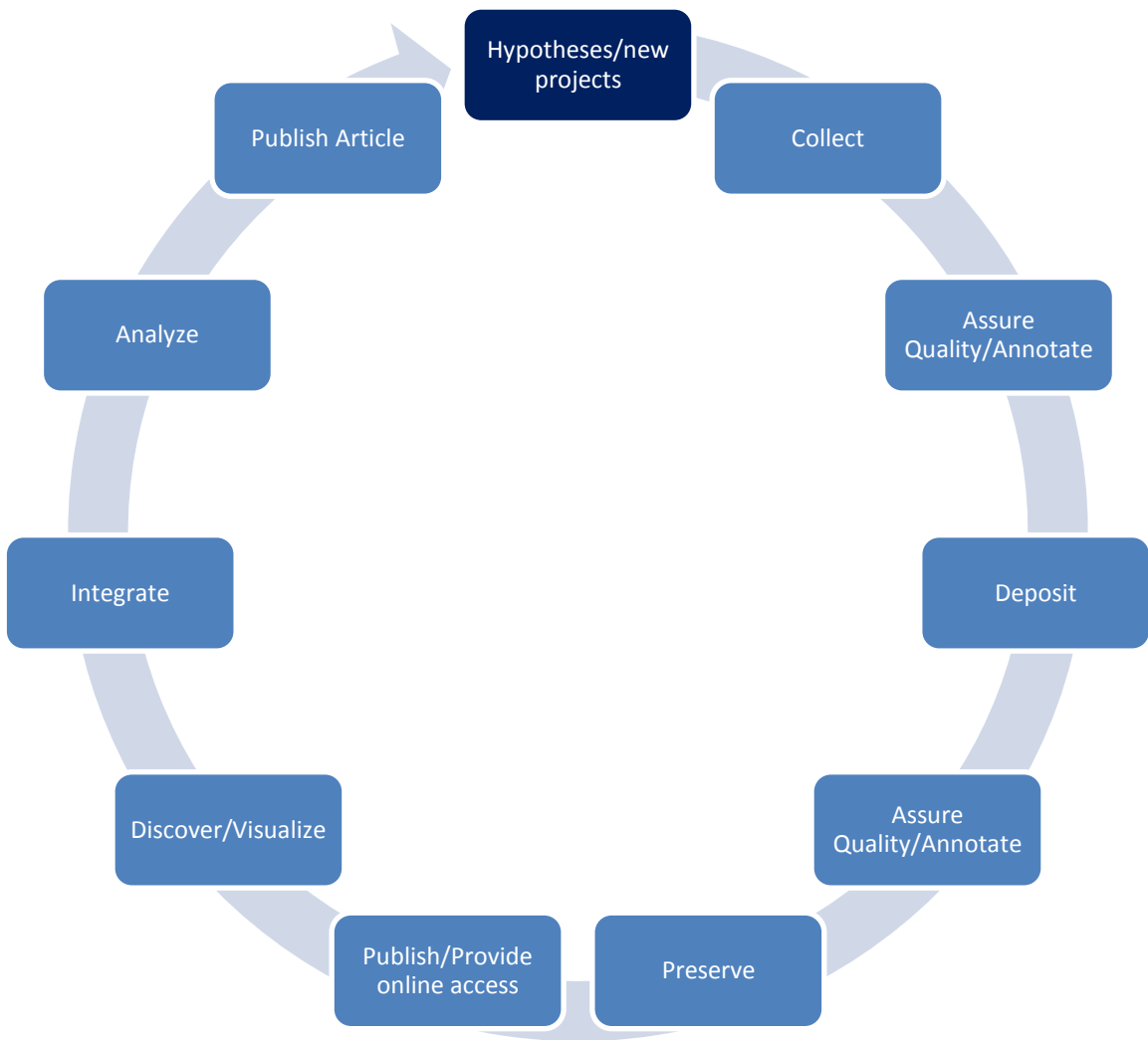
26 Mar 26, 2014  
MAR rda third plenary meeting  
The 3rd Plenary focuses on the theme 'The Data Sharing Community: Playing YOUR Part' and is about exploiting RDA's work to date to its full potential.  
[> read more ...](#)

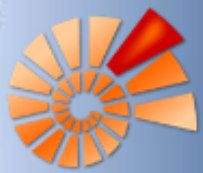
04 Dec 4, 2013  
DEC kick-off meeting launching the german federation for the curation of biological data (gfbio)  
The German Federation for the curation of biological data (GFBio) project is going to be launched during a kick-off meeting which will take place at the MARUM in Bremen, Germany.

- DFG funded project with 19 partners
- a sustainable, service oriented, national data infrastructure
- data preservation and sharing of data from biological and environmental research

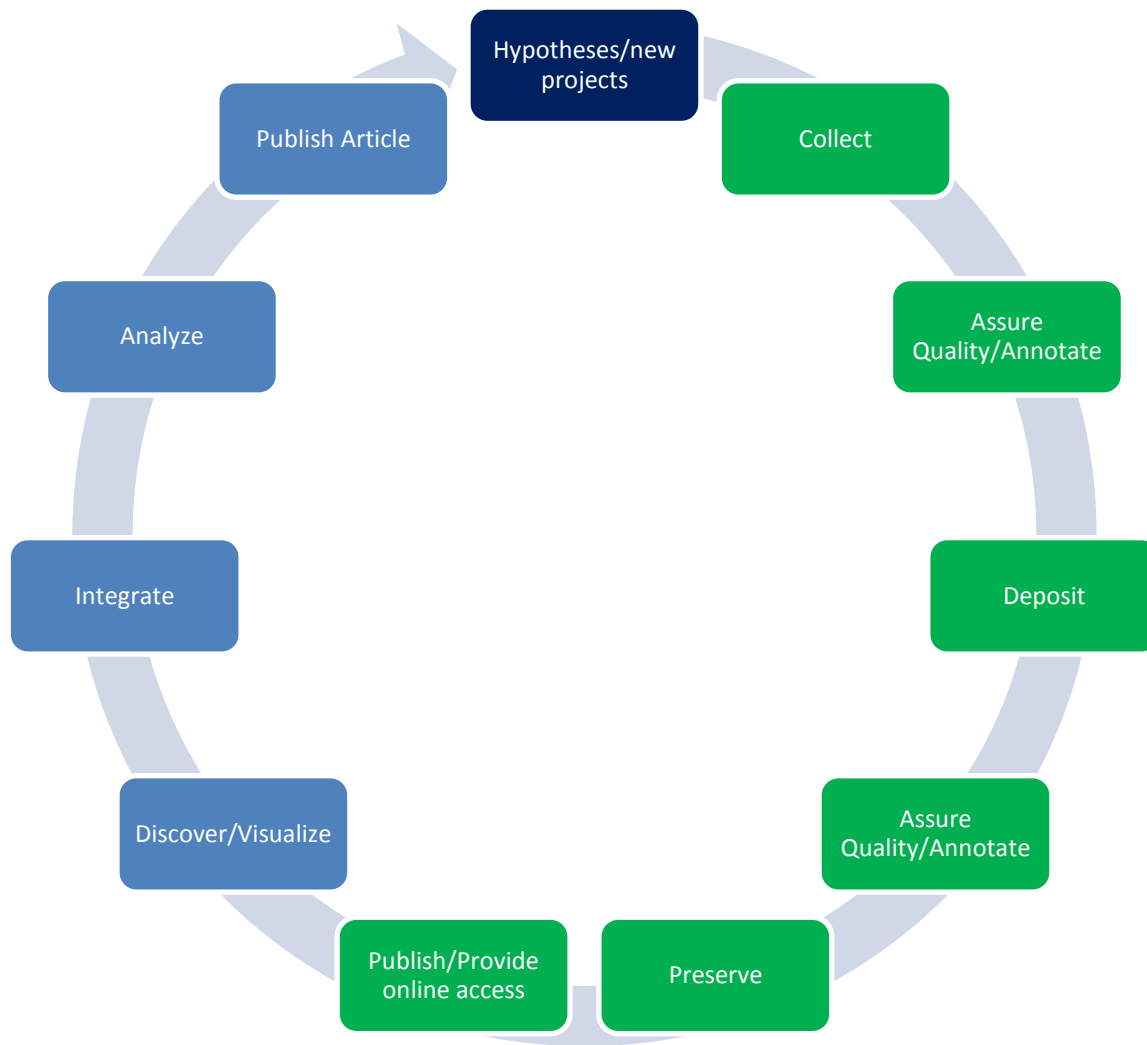


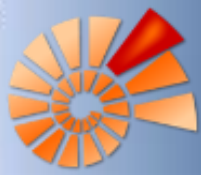
# Data Life Cycle





# DWB in the Data Life Cycle

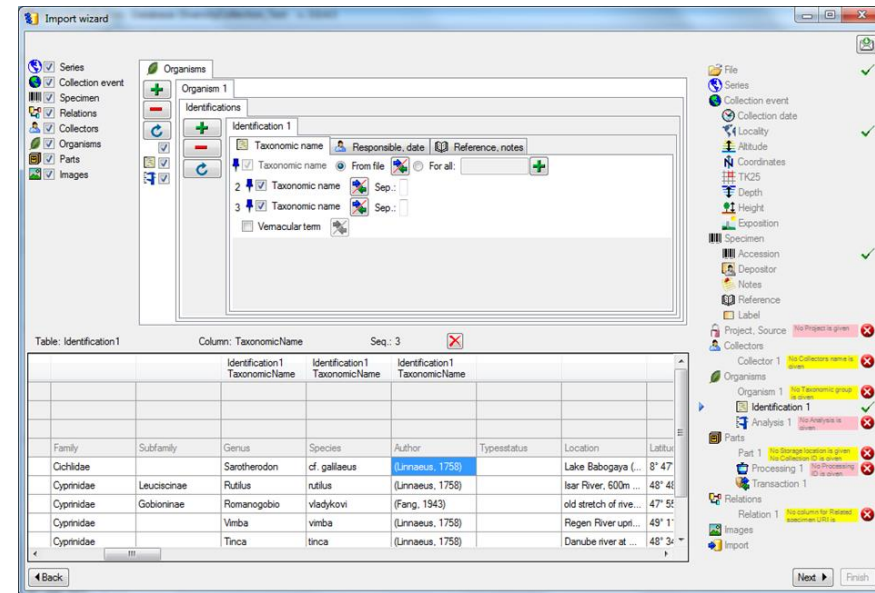


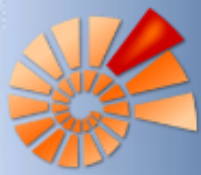


# DWB Services: Deposition

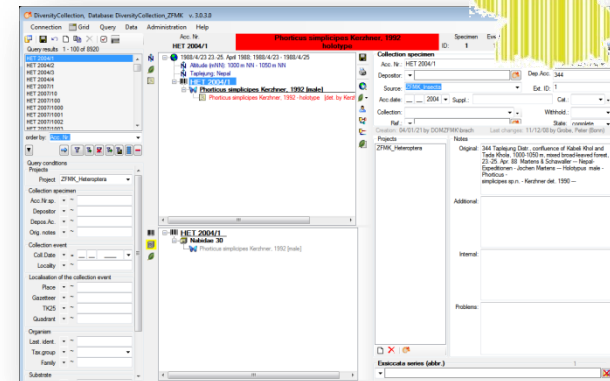
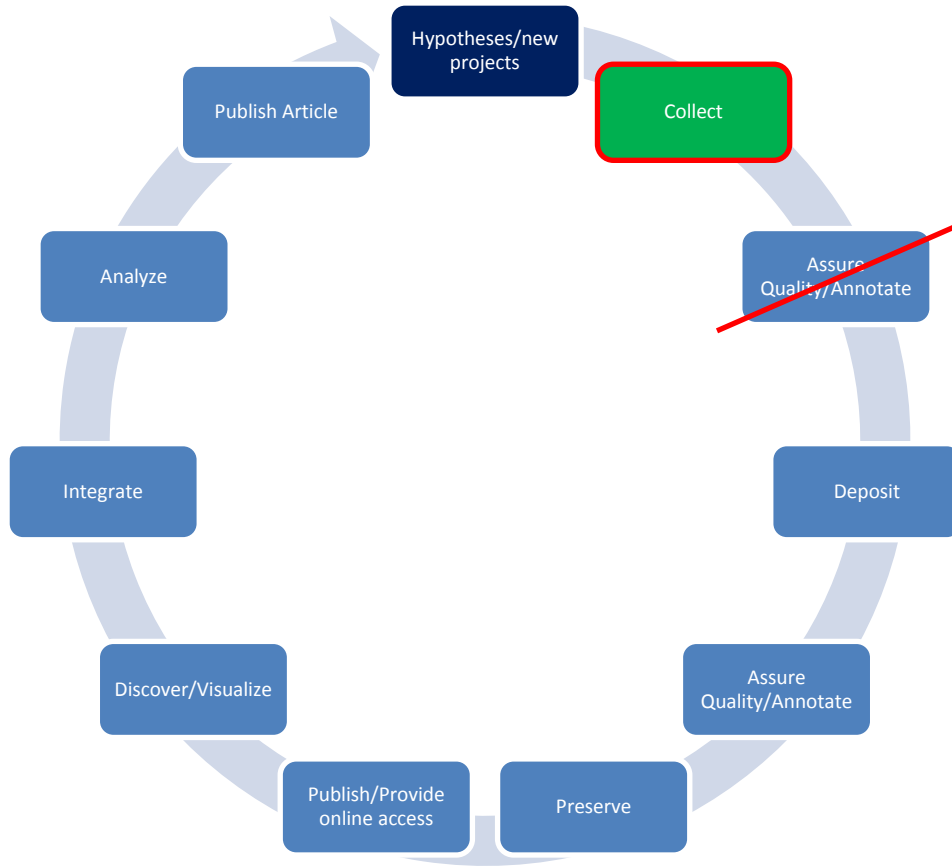


A: Own Master Databases  
B: Project Data Repository  
C+D: GFBio Data Center / Archive

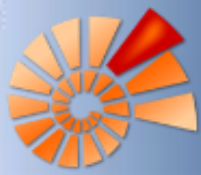




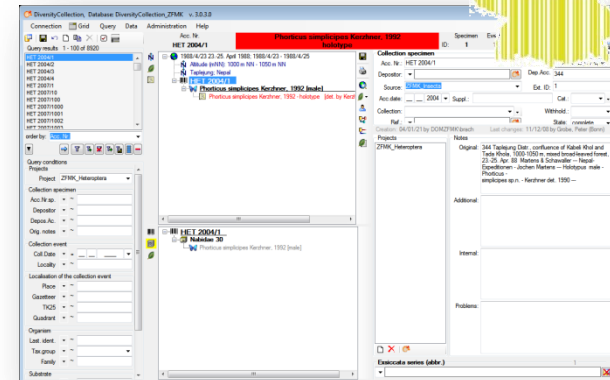
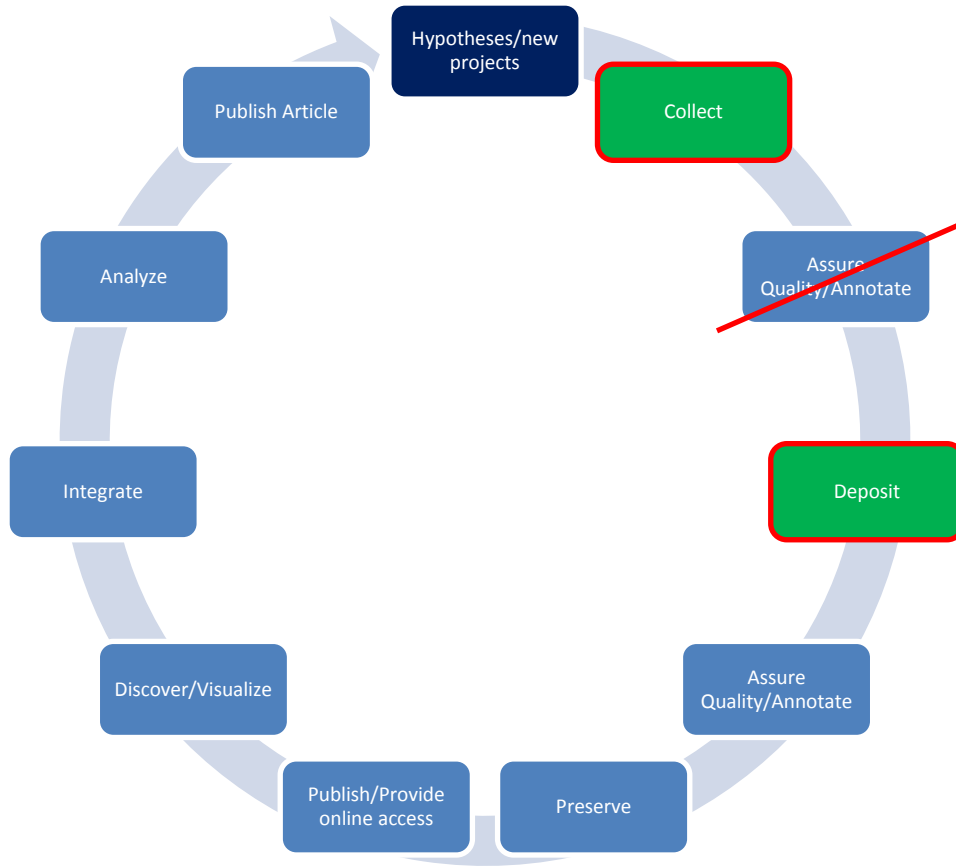
# DWB Services: data gathering in the field and lab

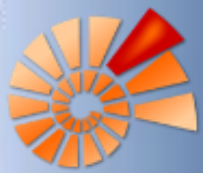




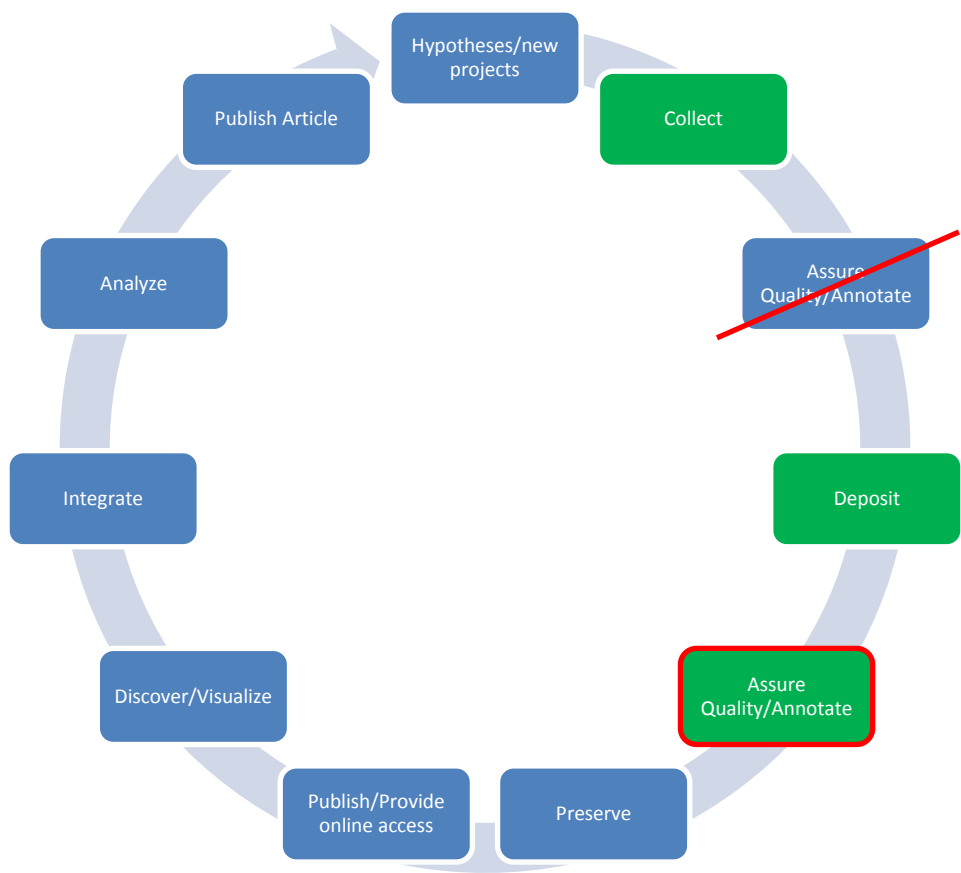


# DWB Services: data gathering in the field and lab





# DWB Services: Quality Assurance



Set query options

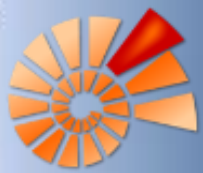
Maximal number of results: 1000  
Limit for drop down lists: 50  
 Min. char. for drop down list: 3

- Altitude
  - Av. Alt.
  - Alt. present
- Place
  - Place
    - Gazetteer
    - Place present
  - TK25
    - TK25
    - Quadrant
    - TK25 present
  - Sampling plot
    - Plot present
    - Sampl. plot
    - Geography
  - Site property
    - Geo. reg.
    - Leb. r. typ.
  - Stratigraphy
    - Chron. strat.
    - Litho. strat.
  - Event method
    - Method
  - Event series
    - Descript.
    - Ser. code.
  - Exsiccata
    - Exsiccata
    - Number
  - Organism
    - Presence
    - Unit ID
    - Only obs.
    - Decl. cont.

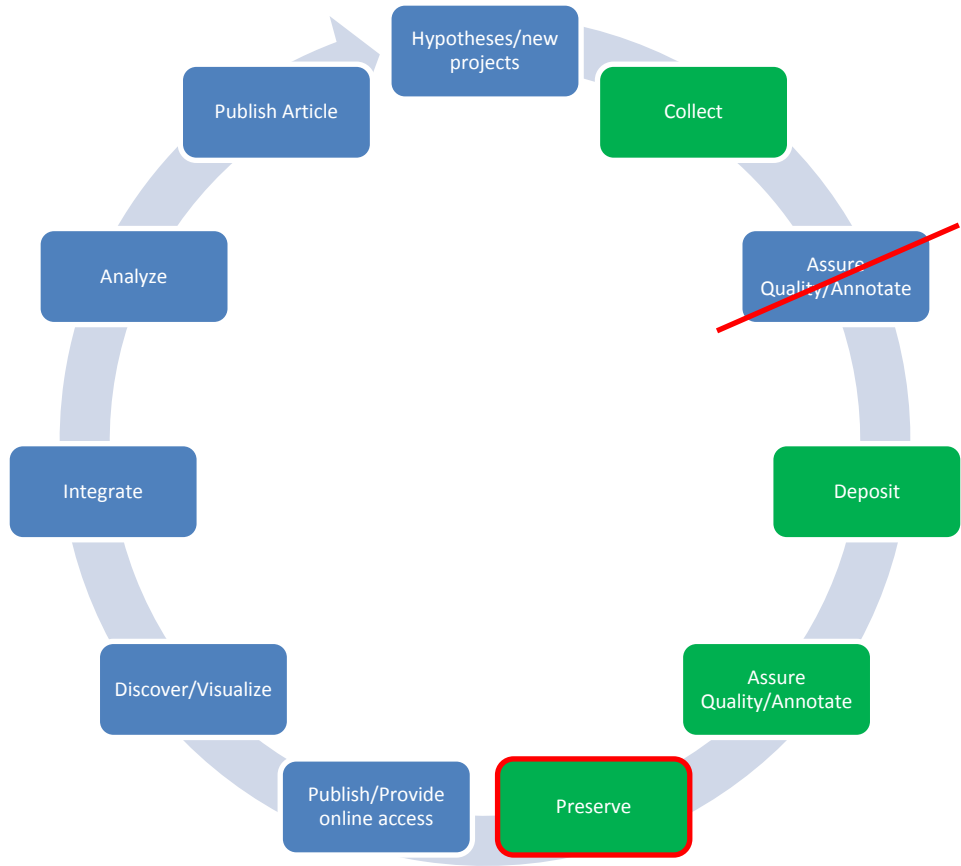
Table: IdentificationUnit  
Column: OnlyObserved

True, if the organism was only observed rather than collected. It is therefore not present on the preserved specimen. Example: Tree under which the collected mycorrhizal fungus grew.

Search for option:



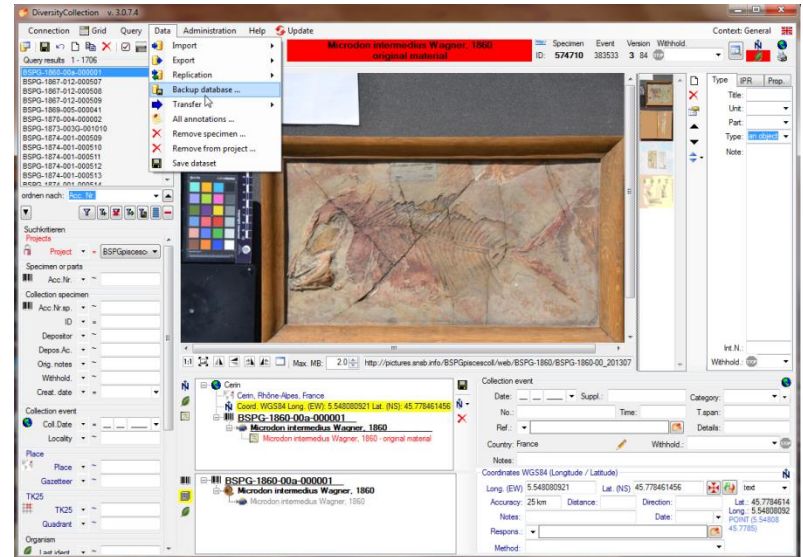
# DWB Services: Preservation

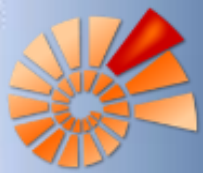


**A: Own Master Databases**

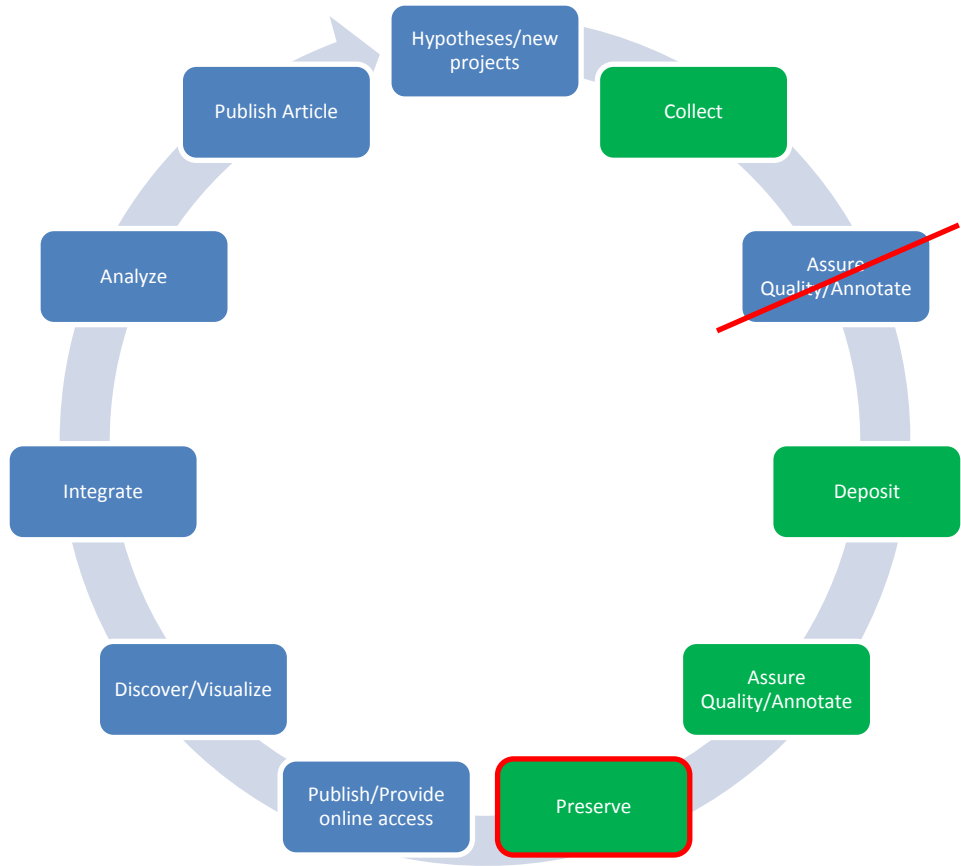
**B: Project Data Repository**

C+D: GFBio Data Center / Archive



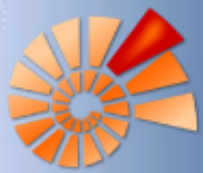


# DWB Services: Preservation

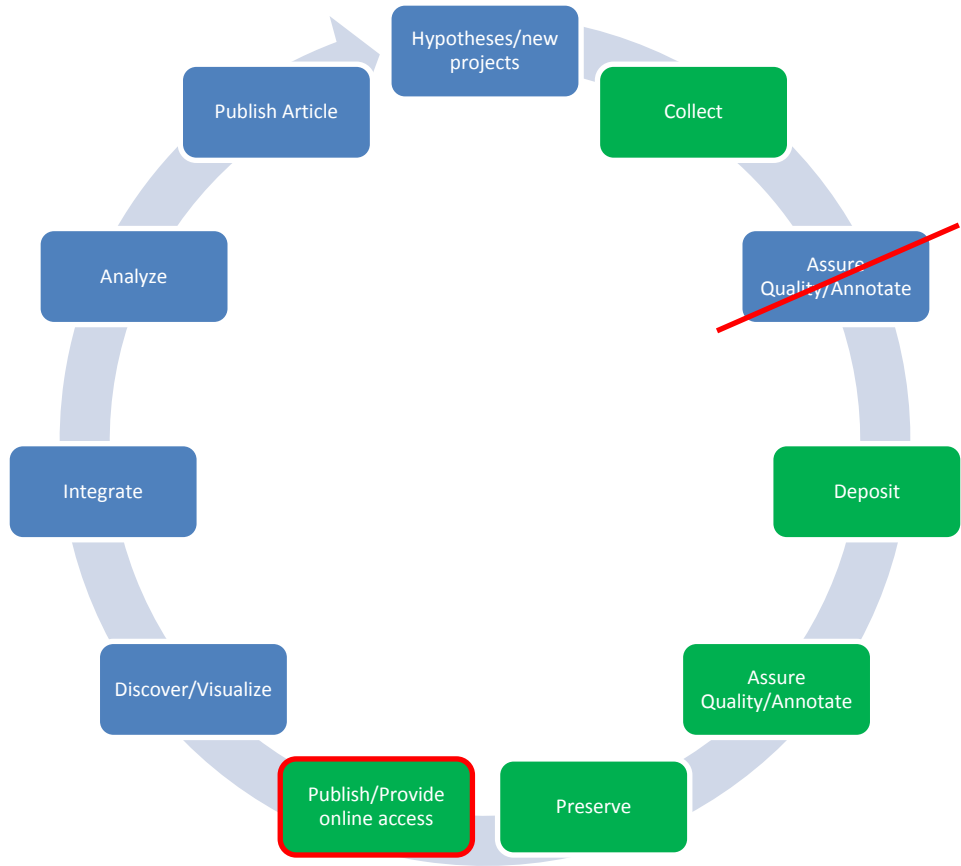


**A: Own Master Databases**  
**B: Project Data Repository**  
**C+D: GFBio Data Center / Archive**



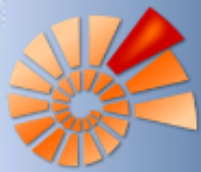


# DWB Services: Publishing / Providing Online Access



ABCD  
→  
Schema





snsb  
it center

HOME ABOUT US PEOPLE SERVICES WORKSHOPS

Workshops



[www.snsb.info](http://www.snsb.info)

Next: **December 2<sup>nd</sup>, 2014**

Location:

SNSB IT Center  
Menzinger Str. 67  
80638 Munich

staatliche  
naturwissenschaftliche  
sammlungen bayerns

# Thank you!